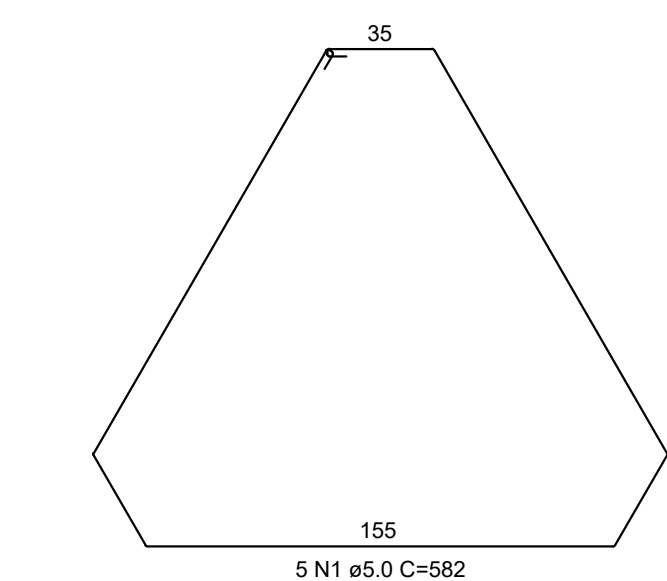
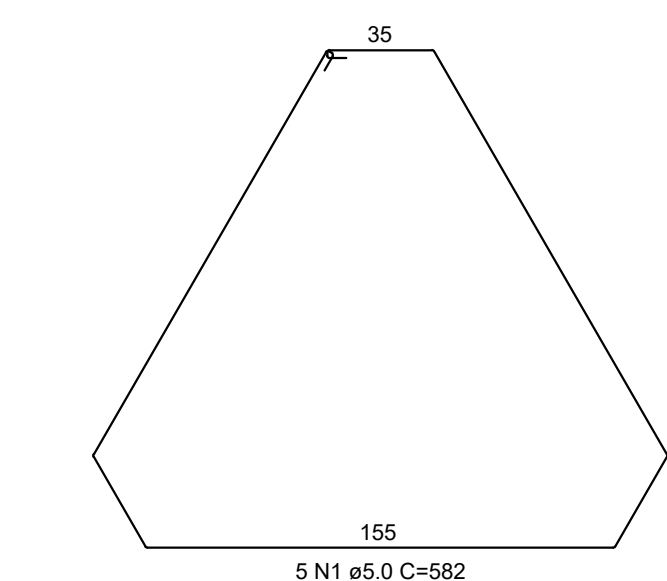


Technical drawing of a triangular plate with three circular holes and a central cross-hatched area. The plate is labeled with N4, N5, N6, N7, N8, and N9. Dimensions include side lengths of 173.9, 60, and 200.8, and hole diameters of 9 N4. The plate is labeled with N4, N5, N6, N7, N8, and N9.



VAR

11 N6 ø8.0 c/14 C=VAR

9

9

N6

N7

400

75

60

5 N1 c/12

N8

N8

CA : 340

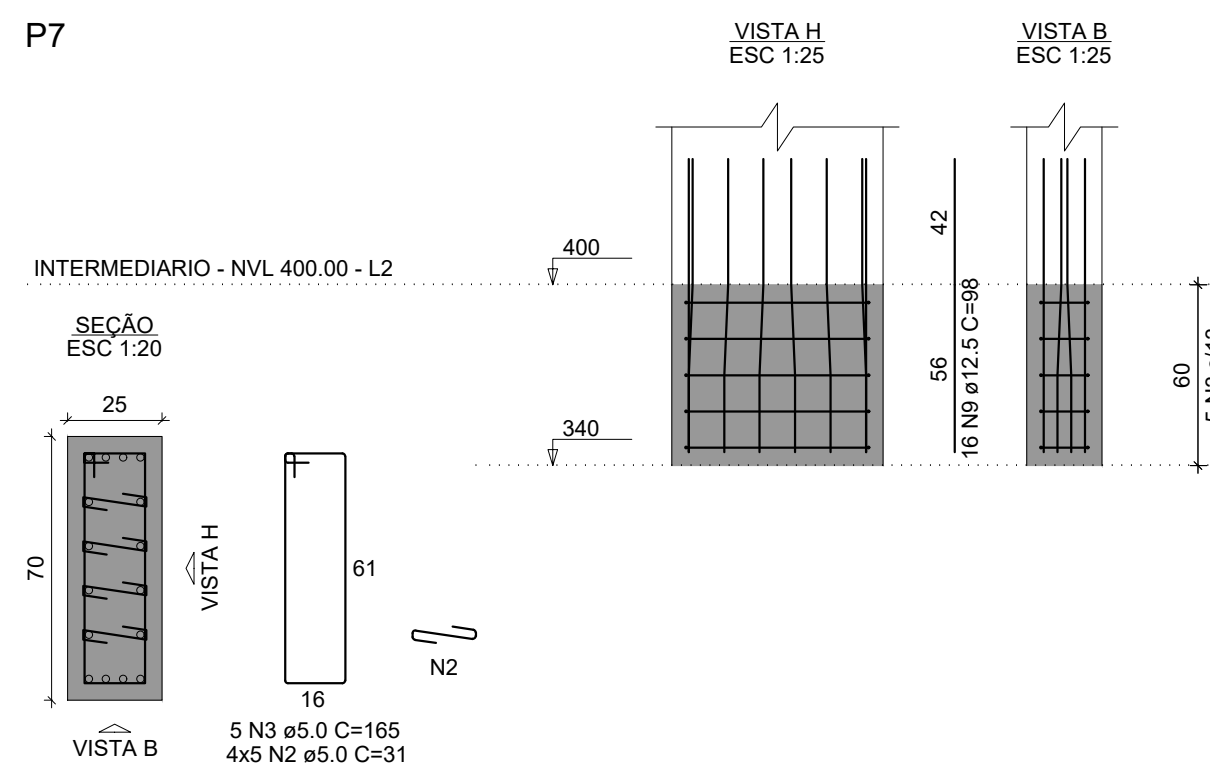
51

164

51

3x9 N8 ø10.0 c/4 C=261

P7



NÍVEL DE REFERENCIA +0,10M

ALTURA DO BLOCO DE COROAMENTO

VAR

30

397

395

16 N4 ø 12,5 C=448

418

30 N3 ø 12

418

30

AFUNILAR ARMADURA PARA FACILITAR INSERÇÃO

COTA DE ARRASAMENTO DA ESTACA NO BLOCO

COTA DE APOIO DO BLOCO

40

33

36 N3 ø 6,3 c/12 C=121

VAR

12 N6 ø8.0 c/13 C=VAR

9

9

N6

N7

400

75

60

5 N1 c/12

N8

N8

CA : 340

51

164

3x9 N8 ø10.0 c/4 C=261

VAR

9

10 N7 ø8.0 c/19 C=VAR

N7

N6

N5

N4

N3

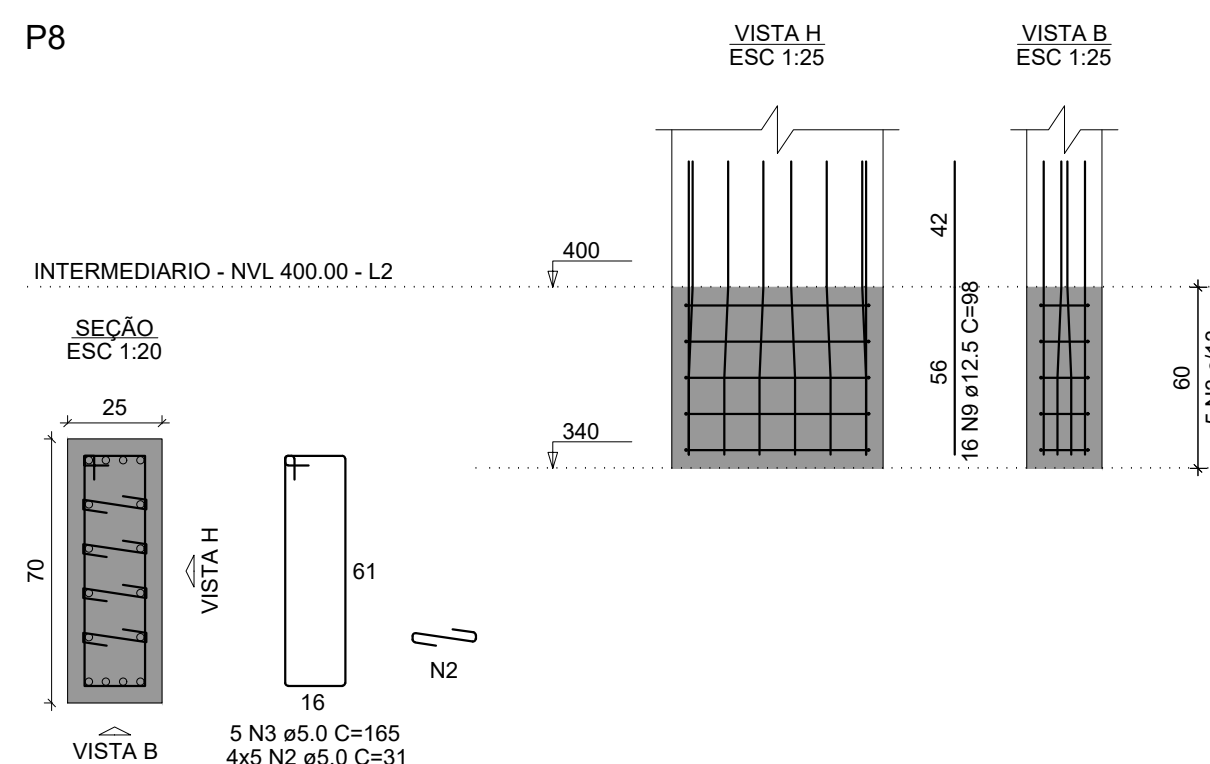
N2

N1

N8

N9

P8



B7 P8		B8		P7	
AÇO	N	DIAM (mm)	QUANT	C.UNIT (cm)	C.TOTAL (cm)
CA60	1	5.0	10	582	5820
	2	5.0	40	31	1240
CA50	3	5.0	10	165	1650
	4	8.0	18	VAR	VAR
	5	8.0	20	VAR	VAR
	6	8.0	23	VAR	VAR
	7	8.0	20	VAR	VAR
	8	10.0	54	261	14094
	9	12.5	32	98	3136

AÇO	DIAM (mm)	C.TOTAL (m)	PESO + 10% (kg)
CA50	8.0	187.2	81.2
	10.0	140.9	95.6
	12.5	31.4	33.2
CA60	5.0	87.1	14.8
PESO TOTAL (kg)			
CA50	210.1		
CA60	14.8		

AÇO	N	DIAM (mm)	QUANT	C.UNIT (cm)	C.TOTAL (cm)
CA50	3	6.3	216	121	26136
	4	12.5	96	418	40128

AÇO	DIAM (mm)	C.TOTAL (m)	PESO + 10 % (kg)
CA50	6.3	261.4	70.4
	12.5	401.3	425.2
PESO TOTAL (kg)			
CA50	495.6		

Volume de concreto = 6.03 m<sup>3</sup>

# ESTRUTURAL